

Terma Software Labs is focused on Workload Automation Analytics, Workload Automation Aggregation, and providing a true Workload Automation Broker bridging the gap between workload environments and the emerging technology markets of Business Service Management, Virtualization, and Data Center Automation.

Align IT to the Business

JAWS aligns IT to the business by enabling you to manage workloads as Jobstreams in association with a business service or business area dramatically increasing business agility. The key differentiator for addressing common challenges associated with your business is rooted in the revolutionary approach of managing Jobstreams instead of individual jobs or events. A Jobstream is automatically created within JAWS by looking at the endpoint of a mission critical business service, and then aggregating all the jobs that exist in the critical path of that job executing and thus forming a Jobstream. That Jobstream can then be correlated to a business service, business area, application, geography, or a combination of all, giving the business insight to proactively manage the successful completion of their mission critical services.

Enabling Functionality

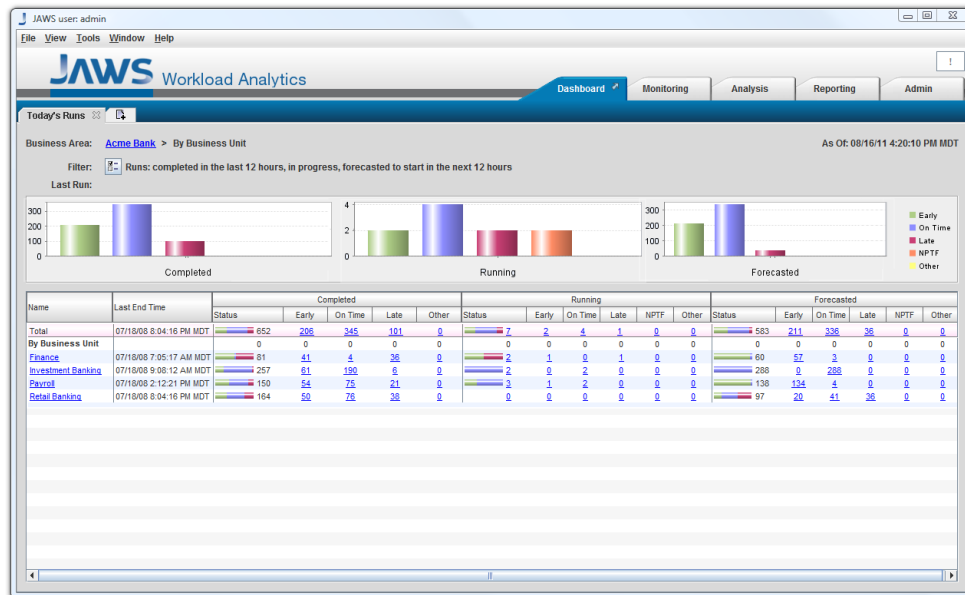
- Jobstream Creation by Mission Critical Job
- Correlation of Jobstreams to Business Areas
- Business Service Dashboards

Reduce Risk

JAWS enables you to Reduce Risk by controlling complexity and providing proactive enterprise wide Job Scheduling Assurance. By understanding what jobs are running in the Critical Path JAWS provides sophisticated Jobstream triage to isolate the root cause of job scheduling errors and provide guided problem resolution. This ensures mission critical Jobstreams will complete successfully with accordance to their associated service level agreement (SLA). This is a very powerful approach to diagnosing failures and delays on historical Jobstream runs, in addition to Jobstreams currently running, and those Jobstreams that are scheduled to run in the future, thus enabling IT to leverage the predictive analytics produced by JAWS to be proactive instead of reactive.

Enabling Functionality

- Top-Down Service Assurance
- Predictive Analytics
- Jobstream Triage



Increase Efficiency

JAWS provides the necessary visibility into your Jobstreams to Improve IT Efficiency by maximizing human and IT resource utilization to effectively manage IT complexity. IT is constantly measured on their ability to do more with less, fix problems before they occur, and isolate the root cause of issues in seconds not days. In the area of Workload Automation, this is no different. JAWS offers rich visualization and heuristics to not only understand where processing bottlenecks are preventing business critical Jobstreams, but also why. A job by job monitoring approach doesn't allow you to focus in on what is most critical at any given point.

Enabling Functionality

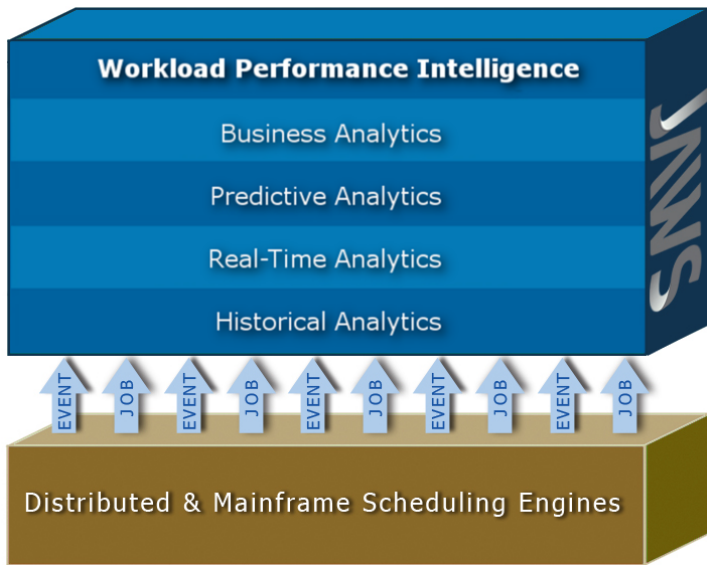
- Rich Visualization
- Critical Path Monitoring
- Workload Optimization

Improve Service Quality

JAWS Improves Service Quality through advanced analysis of your Data Center Workload Environment from an operations, application development, line of business, and management perspective. All levels of the business can see with confidence that the health of critical business services are not going to be impacted by costly scheduling errors. JAWS is extremely flexible within any size environment providing extensive reporting, proactive alerting and notification that can be delivered through various means with the agility to integrate into various third party data center management solutions.

Enabling Functionality

- Real-Time Workload Management
- Line of Business Management
- Enterprise Flexibility



Workload jobs and events are automatically correlated to deliverables to provide analytics and service level assurance.

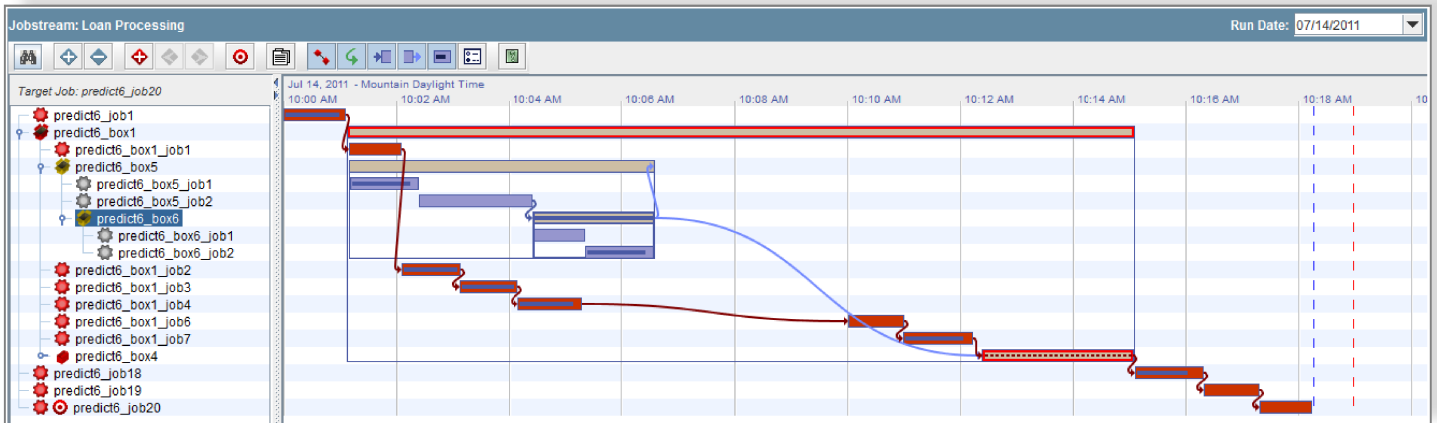
Workload Automation Analytics

We can't impact change if we don't know what we're dealing with. This comes into play on a daily basis in IT departments' Workload Automation environments, today's modern version of batch processing or job scheduling. It's great that the technology has evolved to be more automated, thus reducing manual tasks and the underlying risks associated, but what are you automating? Is your automation impacting the business? Even though you're doing more with less, are you still missing SLA's associated with business critical jobs completing on time? If so, where do you turn to analyze past mistakes so you can make impactful change? How can you get a view into the future so you can make changes in a proactive manner before you're feeling the disastrous effects of jobs failing? And even if you did have answers to all this, could you juggle all of this while keeping an eye to what's running right in front of you?

JAWS provides Workload Automation Analytics giving your business Service Level Assurance, Critical Path Management, and enterprise-wide visibility into your business critical applications.

"Terma has architected JAWS to fit into this Brave New World Approach to capturing CI attributes and interdependencies through its modeling. This suggests a broader role for Terma as higher levels of service impact information and automation will be increasingly needed to support more dynamic Cloud Services and transaction-centric, real-time requirements for a growing variety of innovative business models."

- Dennis Drogseth, Vice President at Enterprise Management Associates (EMA)



Complex interdependencies leading to any business deliverable are managed by JAWS' automatic jobstream aggregation. Jobstreams are then available for reporting, analysis, and predictive alerting providing SLA assurance for critical applications.