

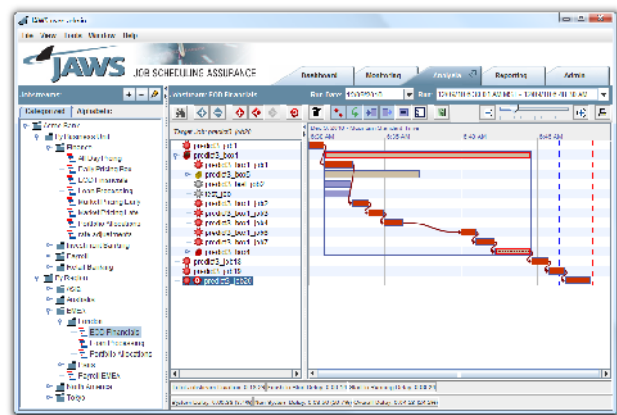
## Leveraging JAWS for Your AutoSys r11 Migration

If you are in the midst of or will soon begin a migration to AutoSys r11 you are in the perfect position to leverage JAWS. In fact, quite a few of our customers have given feedback as to how JAWS has been valuable beyond its day-to-day use to reduce the risk and increase the efficiency of their r11 migration. In this document you'll find some of the ways our customers have leveraged JAWS for an efficient and successful upgrade.

JAWS is the premier Workload Automation Analytics solution enabling you to analyze your workload environment from a business, real time, predictive, and historical perspective. Don't put off an opportunity to take advantage of JAWS' analytics, heuristics, and service level assurance. Implement JAWS before you migrate.

### Increase Efficiency

If your team is concerned that there is no time in the work-day to implement a new solution before your migration, then JAWS is perfect for you. JAWS increases efficiency for operations, administrators, and application developers, freeing up time for migration. JAWS is easy to install and implement and efficiency is gained in reporting, job performance analysis, and in cases of post-mortem analysis JAWS can reduce the hours spent poring through logs and archive files to seconds leveraging JAWS' Gantt-chart visualization of your jobstreams. More importantly, JAWS' predictive alerting will keep you on track to meet SLAs, eliminating the need for post-mortem analysis altogether.



#### Enabling Functionality:

- Jobstream Summary (SLA) Report
- Gantt-Chart Jobstream Visualization (right)
- SLA Assurance

*Jobstream visualization is just one way that JAWS increases efficiency, and helps users optimize jobstreams. JAWS reports are customizable, easy to create, and allow users self-service and secure access to workload data.*

"Before our migration I was spending hours a day responding to our users that needed ad hoc reports and information on their jobs. Rolling out JAWS and allowing them to create and run their on reports freed me up as an administrator to work on our upgrade."

### Reduce Risk

Migrating to r11 introduces risk of scheduling errors in business critical applications materially harming your business' bottom line. JAWS is an entirely new way to ensure the success of critical applications through automatic jobstream aggregation. Anything that can potentially jeopardize the success of any of your jobstreams triggers notification within JAWS. Whether a job is migrated without its calendar, a job is inadvertently left on hold, or longer than average durations or latency are interfering with your deadline, JAWS provides predictive analytics and alerting to ensure your SLAs are met during your migration.

#### Enabling Functionality:

- Automatic Jobstream Aggregation
- User-Defined Late-times and SLAs with Predictive Alerts (right)
- Scheduler Conversion Report



*Predictive alerts notify on entire jobstreams, not just an individual job, providing advanced notice if any of your deliverables are in jeopardy of being late or not completing.*

"We had a production issue right away where jobs were not running because a calendar had expired in the New Year. If we had JAWS during our migration we would have caught that right away."

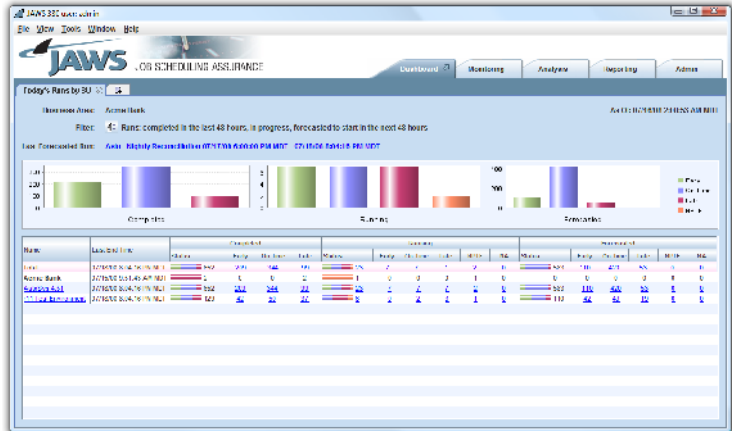
## Parallel Monitoring of Multiple Environments

Bringing in a brand new AutoSys instance may not mean that you'll be able to instantly move away from your existing production environment. In fact, most users are implementing a phased approach to migration meaning that there are potentially double the number of AutoSys instances to monitor. JAWS' ability to connect to all of your AutoSys instances in one easy-to-use interface allows you to more efficiently monitor and analyze all of your environments and migration efforts.

### Enabling Functionality:

- Multiple AutoSys Instance Support
- Role-Based Security
- Business Area Filtering/Dashboard (right)

"During our migration I was responsible for twice the number of servers and twice the number of jobs. Using JAWS meant I managed everything from one place"



JAWS supports connections to multiple AutoSys instances. View all of your environments from a single pane of glass from the Business Area Dashboard above. Business Area filtering allows you to drill into any logical grouping, be it by scheduler, application, or user.

## Avoid Redundant Development Efforts

AutoSys has always been a powerful and reliable scheduling engine appropriate for enterprise level volume and utilization. However, for years users have developed scripts and reporting solutions to derive more intelligent data out of AutoSys. With the release of r11 and subsequently r11.3 we also see new architecture and DB schemas that will require users to revise and re-write their solutions in order for them to work with each new release. If your team relies on home-grown solutions currently, your migration is a great opportunity to move to customizable, enterprise caliber software that will not require your team to redevelop disparate and home-grown solutions.

### Enabling Functionality:

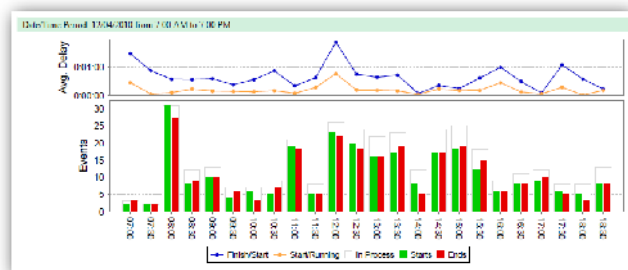
- JAWS' Extensive Enterprise Customer Base
- Technical Support and On-going Product Development
- Terma Software Labs' Development Partnership with CA

## Identify Optimal Downtime

Leverage JAWS' Processing Load report to find quiet periods for when server downtimes should be scheduled. In real-time, use the JAWS monitoring console and Business Area Dashboard to be sure that all critical jobstreams are finished before taking down AutoSys to guarantee that your upgrade procedures do not interfere with business deliverables.

### Enabling Functionality:

- Processing Load Report (right)
- Real-time Jobstream SLA Monitoring
- Business Area Dashboard



JAWS Reports can be easily filtered by Business Area, allowing users to access data relevant to their applications and deliverables. Users can also be limited to specific Business Areas by JAWS Administrators.

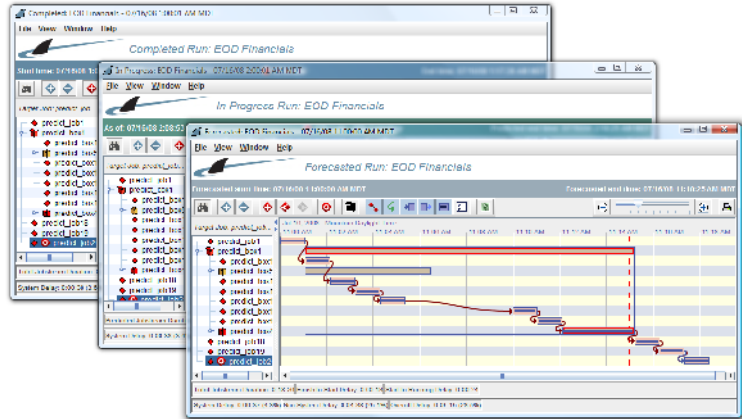
"I really like the idea of using JAWS to find quiet times for the Upgrade and also for ensuring that critical batches are complete."

## Before and After Studies

New r11 architecture and functionality, such as true multi-threading, promise better performance out of your scheduler. The ability to quickly examine and understand critical batches that JAWS provides is enormously helpful to have at your fingertips. JAWS' intelligent latency and performance metrics are an easy and powerful way to gauge AutoSys performance before and after your migration.

### Enabling Functionality:

- Processing Load Report
- Jobstream Detail Report
- Gantt-Chart Jobstream Visualization (right)



"These are the areas often overlooked when doing an upgrade. We always sweat things like the architecture, the testing of the systems -- the roll out, etc. Then once we have gone live you get managers asking, 'So what improvement did the new version bring?' And we can never quantify it with numbers. They always want stats!"

*Easily compare performance before and after your migration with access to historical, real-time, and forecast data giving you critical information on individual jobs as well as jobstreams as a whole. Historical data is valuable in understanding your current and future environment.*

## Optimize JIL

The more sophisticated and complex the AutoSys environment, the higher the chance that legacy JIL and inefficiency are hiding within the definitions that already exist. Migrating the same problems you've had in the past to a new server is a wasted opportunity to gain better performance out of your scheduler and your team. JAWS not only identifies any errors in your JIL, but can highlight legacy jobs, or jobs that carry inefficiency due to designed delay.

### Enabling Functionality:

- Scheduler Conversion Report (right)
- Jobstream Detail Report
- Gantt-chart Jobstream Visualization

"Backward-compatibility issues between r11 and prior versions will probably be challenging enough without adding dirty JIL into the mix."

Scheduler Conversion		Date generated: 01/13/2011 15:21:29 MS	
<b>Scheduler Name:</b>	warp	<b>Converter Run Time:</b>	01/13/2011 14:37:08 MST
<b>Number of AutoSys Jobs:</b>	8,571		
<b>Missing Calendar</b>			
Job	Calendar		
RC_job1	RC_Calendar		
NotRun_expired_doesnotrun	expired		
MANUALS	general		
<b>Job Missing in Condition</b>			
Job	Missing Job	Condition	Condition Type
roccomes9_missing	JobNotDefined	s(roccomes9_start) AND s(JobNotDefined)	CONDITION
roccomes10_delete	roccomes10 deleted	s(roccomes10_job ?) AND s(roccomes10 deleted)	CONDITION
roccomes10_delete	roccomes10 deleted	s(roccomes10_job ?) AND s(roccomes10 deleted)	CONDITION
testdisruptive_job1	testdisruptive_job1	s(testdisruptive_job1) OR s(testdisruptive_job2)	CONDITION
testdisruptive_job2	testdisruptive_job2	s(testdisruptive_job1) OR s(testdisruptive_job2)	CONDITION
roccomes_box_case_d_test	roccomes_box_case_d_sctracebox	s(roccomes_box_case_d_sctracebox)	CONDITION
testdisruptive1	foo_foo	s(foo_foo)	BOX_SUCCESS
test	UC189	s(UC189)	CONDITION
test_box	foo_foo	s(foo_foo)	BOX_SUCCESS

*Inefficiency and risk can hide in your JIL in many ways. The JAWS Scheduler conversion report automatically detects any logical or syntactical errors in JIL that can cause your applications to fail. The Jobstream Detail Report detects any delay or latency that cost you valuable time in the batch window.*

## Maximize User Adoption

The new front end of r11 is WCC, requiring users to learn a new way of navigating around the AutoSys environment. JAWS eases this part of the migration by allowing your users to view their most important batch data in JAWS, filtered to the jobstreams pertinent to them without the noise and clutter of the entire AutoSys instance. The WCC-JAWS integration provides much more user friendly and valuable access to AutoSys than ever before, making this a great opportunity to get better buy-in from users for a solution in which you are making a continued investment. Moving to JAWS and WCC before your r11 integration makes this transition absolutely seamless for your users.

### Enabling Functionality:

- Easy to Use Interface
- WCC-JAWS Integration via EEM
- Business Area Filtering by User

"We are getting all our users using JAWS and WCC -- then we plan to upgrade to r11. As a result, everyone will be ready to go on the very first day."

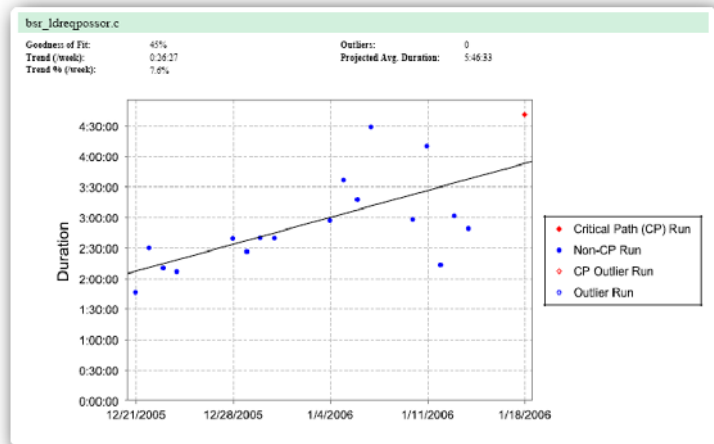
## Maintain Historical Continuity

JAWS' historical data repository gives you instant access to average run statistics, latency metrics, and other valuable historical data that you will maintain through your migration. Take advantage of this data to validate the success of your migration. The very first time your application runs on an r11 server, compare it to its historical runs in your previous environment via reporting or Gantt-chart visualization. The time you save on analysis alone will ensure you get through your migration as efficiently and successfully as possible.

### Enabling Functionality:

- JAWS Historical Data Repository
- Trending by Job Run History Report (right)
- Gantt-chart Jobstream Visualization

"I like the seamlessness of being able to see job history. It allowed us to resume 'business as usual' following the upgrade. What a concept!"



*Moving to a new r11 implementation does not mean that you can leave your history behind. JAWS users have become accustomed to easy access to historical data including job trending graphs like the one above. Implementing JAWS before your migration means seamless access to historical data.*

